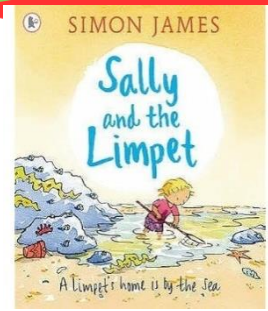




This week, we will enjoy the story **Sally and the Limpet**, sequence the events, and retell the story. We will also explore rock pool animals and learn about their coastal habitats.



Phonics

Year 1 - We will be recapping and consolidating a range of phonemes in order to prepare us for the 'quiz' this week!

Reception - Phase 4 words such as green and church.

Tricky words - like and some

Geography

Year 1 - We will identify different geographical features found in the UK.

Reception - We will explore how places can have different features, including land and water.

Maths

Year 1 - We will be exploring position and direction.

Reception - This week, we will be exploring odd and even numbers.

PE

We will be learning to balance on small body parts.

Vocabulary Ninja

Curious, attached, clung

Please try and "sprinkle" these words at home.

As always, keep checking the class page for pictures and videos. We are sure the children will be proud to show you what we get up to.

Thank you for your continued support.

Miss Lancaster and Mrs Whitwell

Week
beg.
8.6.26