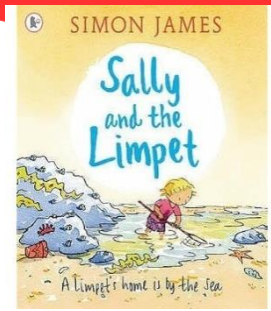




This week, we will continue exploring Sally and the Limpet, sequencing and retelling the story with actions. We will also create our own versions by changing the character.



### Phonics

**Year 1** - We will be introducing the graphemes oor, ore, al, our, oar, and ough (or - touch).

**Reception** - We will continue "tuning in" to CCVC and CCVCC words such as crab and frost.

Tricky words - come, there and were

### Geography

**Year 1** - We will locate the seas and oceans surrounding the UK.

**Reception** - We will explore maps and globes, discovering that blue usually represents water and green represents land.

### Maths

**Year 1** - This week, we will be exploring fractions.

**Reception** - This week, we will be exploring patterns.

### PE

We will be performing a variety of gymnastic rolls.

### Vocabulary Ninja

Curious, attached, clung

Please try and "sprinkle" these words at home.

As always, keep checking the class page for pictures and videos. We are sure the children will be proud to show you what we get up to.

Thank you for your continued support.

Miss Lancaster and Mrs Whitwell

Week  
beg.  
15.6.26